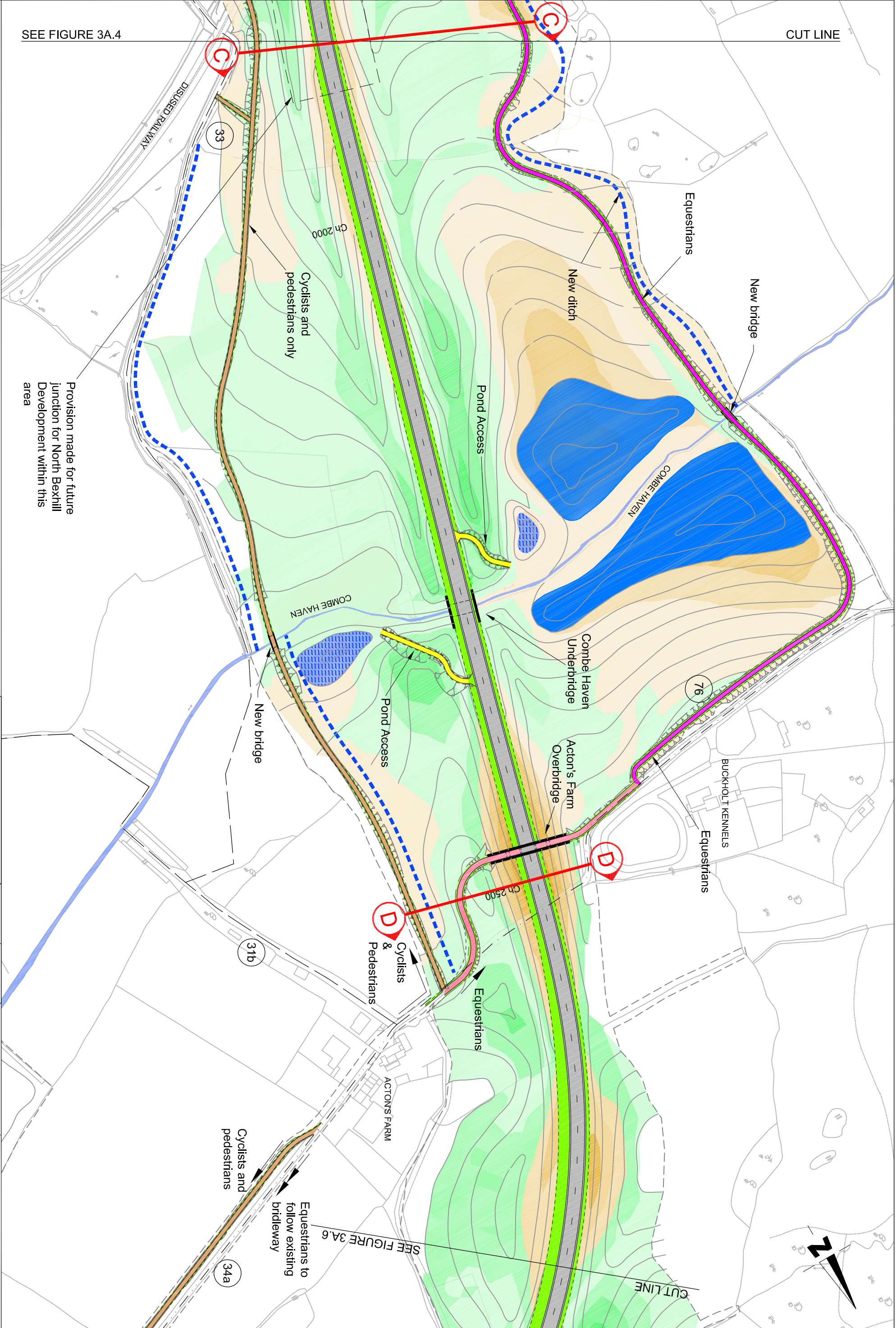


The map is reproduced from Ordnance Survey material with the permission of Ordnance Survey on behalf of the Controller of Her Majesty's Stationery Office © Crown copyright. Unauthorised reproduction in any form is prohibited. Ordnance Survey is a registered trademark of Ordnance Survey Limited. Ordnance Survey is a registered trademark of Ordnance Survey Limited. Ordnance Survey is a registered trademark of Ordnance Survey Limited.



SEE FIGURE 3A.4

CUT LINE

Provision made for future junction for North Bexhill Development within this area

# BEXHILL TO HASTINGS LINK ROAD

<b>Figure : 3A.5</b>		<b>Scale</b>	<b>1:2500</b>	Caedyn Dwyer Bering (hons), DE/Trans, DHS, MHT, MLT, Assistant Director, Transport & Waste County Hall, St. Ann's Crescent Brighton, BN1 1PL Telephone: 01273 481100
<b>SCHEME PLAN</b>		<b>Sheet</b>	<b>3 of 7</b>	
<b>Revision</b>	<b>03</b>	<b>April 2007</b>		

Transport & Environment



SEE FIGURE 3A.6

CUT LINE

